

5 SCULPTORS



# 5 SCULPTORS

PABLO ATCHUGARRY

SUKHI BARBER

DAVID BEGBIE

OLIVIER CHALMIN

NAOMI PRESS

ALBEMARLE

---

**G A L L E R Y**

49 ALBEMARLE STREET

LONDON W1S 4JR UK

T +44 (0)20 7499 1616

F +44 (0)20 7499 1717

INFO@ALBEMARLEGALLERY.COM

WWW.ALBEMARLEGALLERY.COM



## PABLO ATCHUGARRY (born 1954 Uruguay)

Internationally acclaimed sculptor Pablo Atchugarry's works form part of many major collections, both public and private. He has held more than 100 solo and collective exhibitions worldwide. His statue Seed of Hope stands in the garden of the Uruguayan parliament, whilst in the city of Lecco (Italy) he has his own museum.

His work is based on the principal that the natural beauty of marble is enhanced if the form remains simple. Atchugarry's simplicity consists of variations on linearity - while avoiding straight lines. The volumes do not have any sharp sides, corners become inclinations, grooves become pleats.

He spends the majority of his year in Lecco, Italy, where he works primarily in Carrara marble and Portuguese pink marble.

1 Untitled bronze edition of 8 69 x 14 x 11 cm (27 x 6 x 4 in)



2 Untitled statuary Carrara marble, unique sculpture 141 x 30 x 17 cm (56 x 12 x 7 in)



3 Untitled pink Portugal marble, unique sculpture 49 x 19 x 18 cm (19 x 7 x 7 in)



4 Untitled statuary Carrara marble, unique sculpture 55 x 28 x 12 cm (22 x 11 x 5 in)

## SUKHI BARBER (born 1972 England)

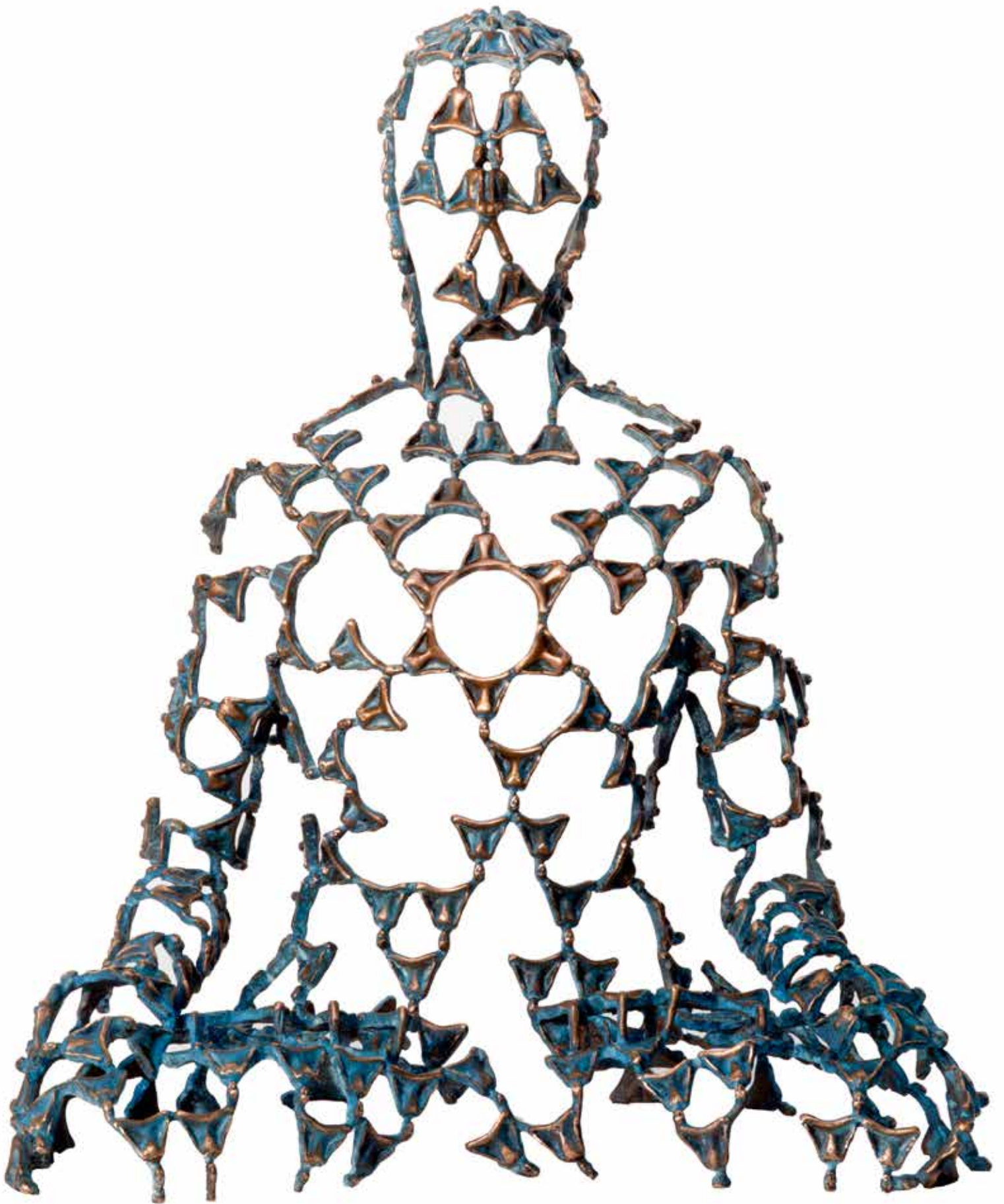
From an early age Barber was drawn to the classical and ancient traditions of art and philosophy, which led her to undertake traditional sculptural training at The City and Guilds of London Art School. Having travelled extensively and inspired by many varied cultural experiences she spent twelve years studying Buddhist philosophy and producing sculptures based on the traditional techniques of stone carving and lost-wax bronze casting.

Barber's sculptures are intended to bridge the cultures of East and West. Embodying the peace and compositional balance of ancient devotional art, they represent complex philosophical ideas with a simplicity and clarity that renders them accessible to the Western viewer. Exploring themes of hidden potentials, and the transcendence of our limiting view of a solid reality, her work often represents the negative space as being as important as the material itself, implying the dance of form and spirit, a constant state of transformation.





5 Radiance bronze edition of 9 31 x 24 x 17 cm (12 x 9 x 7 in)



6 Embodying Space bronze edition of 6 62 x 52 x 36 cm (24 x 20 x 14 in)





7 Emanation I bronze edition of 6 62 x 52 x 36 cm (24 x 20 x 14 in)



8 Crystal Clear bronze and crystal edition of 9 39 x 23 x 24 cm (15 x 9 x 9 in)





9 Autumn Moon bronze and crystal edition of 9 38 x 25 x 22 cm (15 x 10 x 9 in)



10 Thaw bronze edition of 9 31 x 24 x 17 cm (12 x 9 x 7 in)





11 Synthesis bronze edition of 9 33 x 24 x 17 cm (13 x 9 x 7 in)



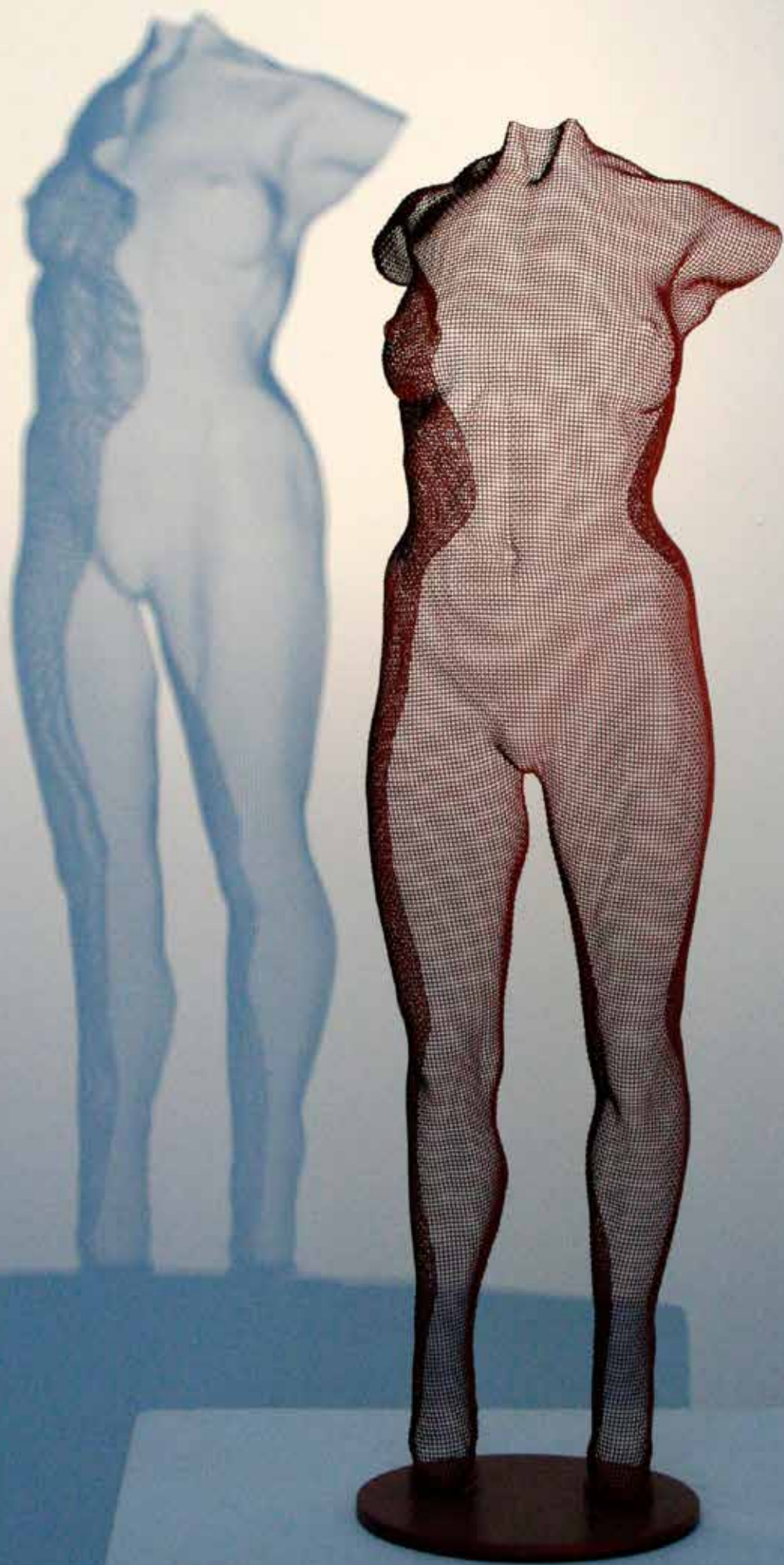
## DAVID BEGBIE (born 1955 Scotland)

David Begbie has worked almost exclusively with the human form, primarily sculpting in steelmesh and his world-renowned figurative bodies are powerful, erotic, tactile and intimate. The steelmesh material adds intrigue yet is somehow familiar making the viewer curious to know how the perfection of form is achieved.

The translucent works interact with light to create a dynamism and sense of movement, which integrates with their environment. The catalytic effect a Begbie sculpture has in any setting, given that it has no palpable substance or surface, is phenomenal. Each work is an entity, which has a far greater physical presence than any solid object could possibly have because it has the power to suggest that it doesn't exist. Begbie has exhibited worldwide and has an extensive list of public commissions. He is an Associate of the Royal Society of British Sculptors.

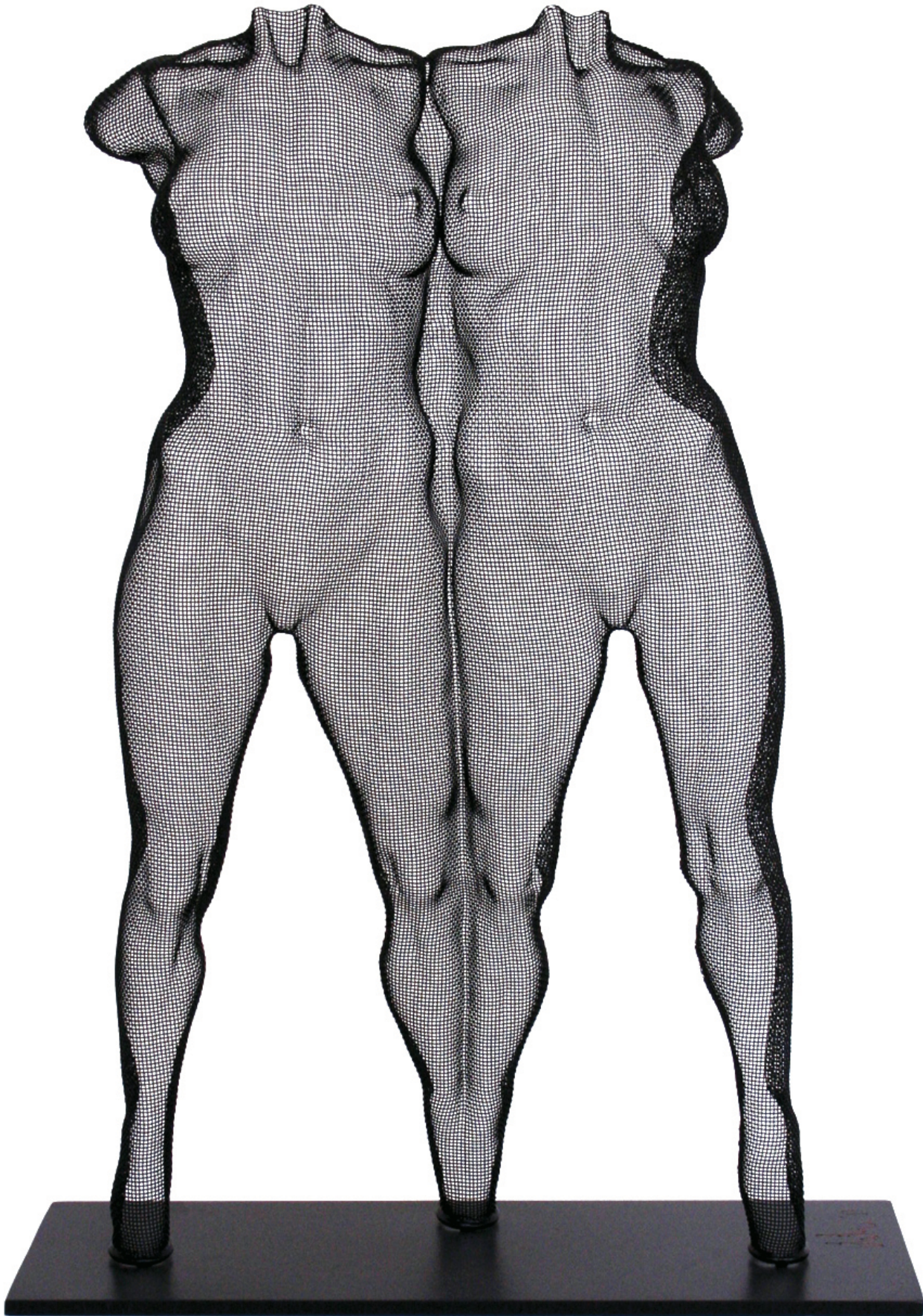
12 GNUD grey steel mesh, unique sculpture 51 x 16 x 13 cm (20 x 6 x 5 in)





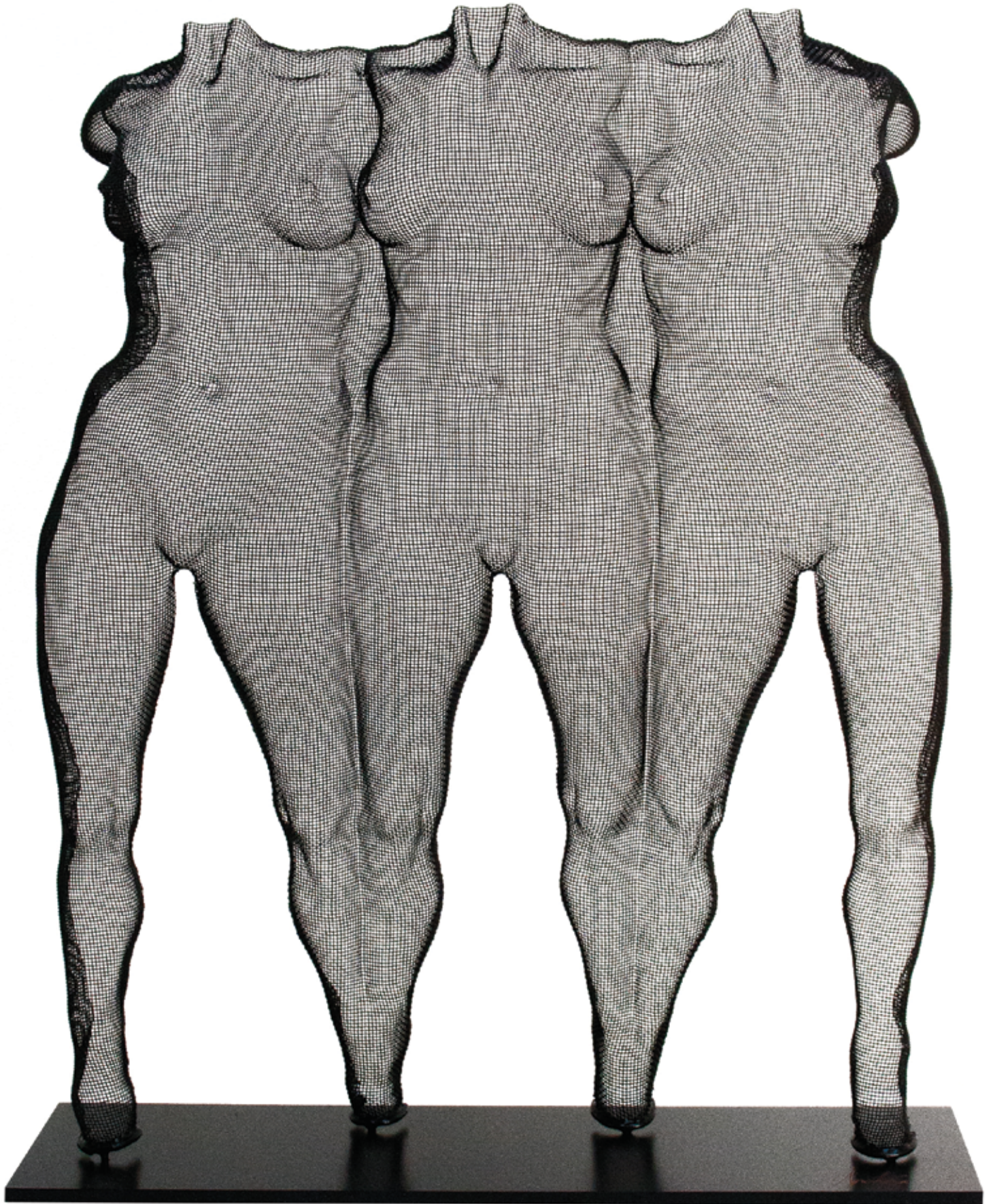
13 FNUD red steel mesh, unique sculpture 51 x 16 x 13 cm (20 x 6 x 5 in)





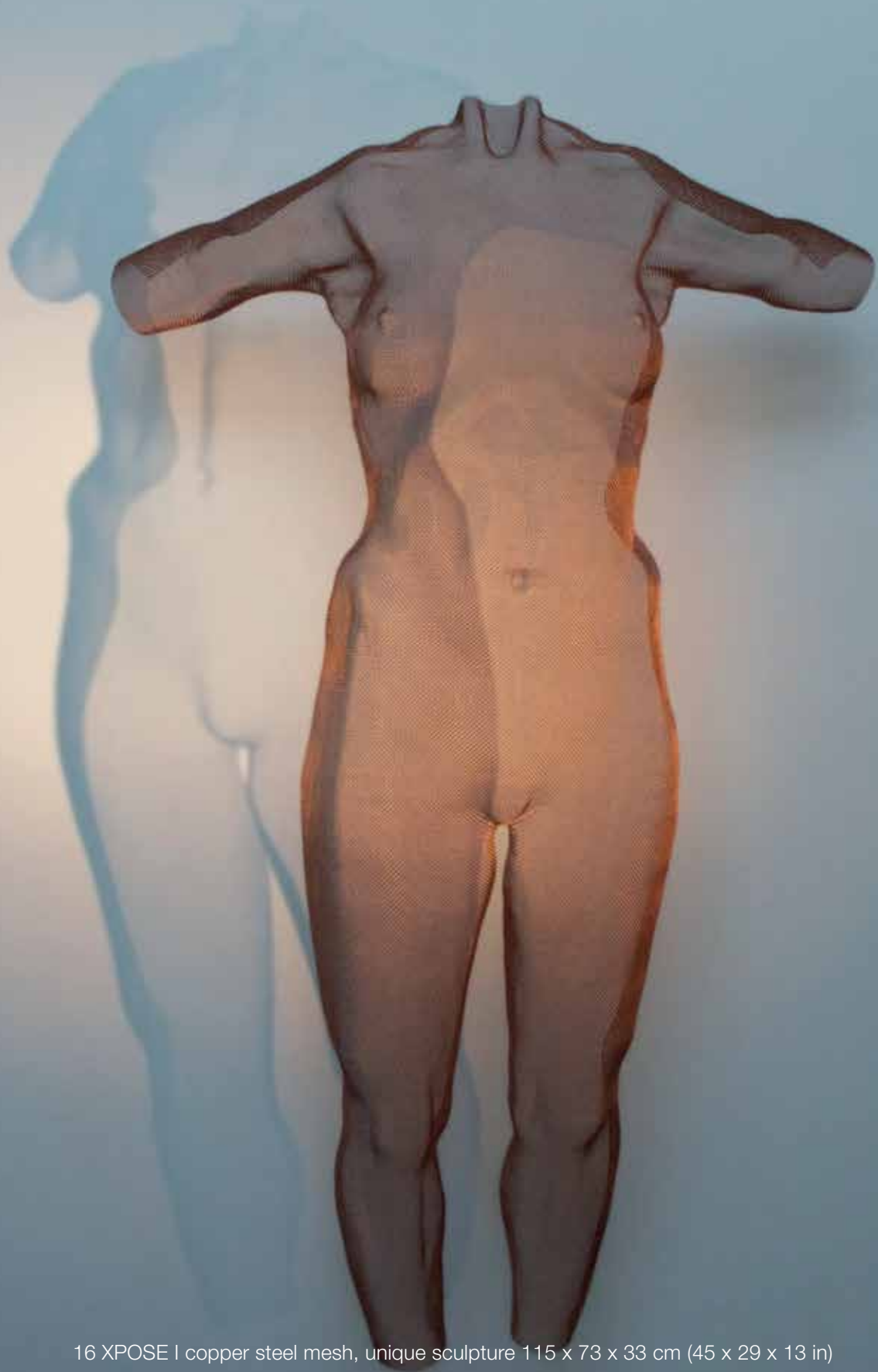
14 GENUU black steel mesh, unique sculpture 52 x 36 x 13 cm (20 x 14 x 5 in)



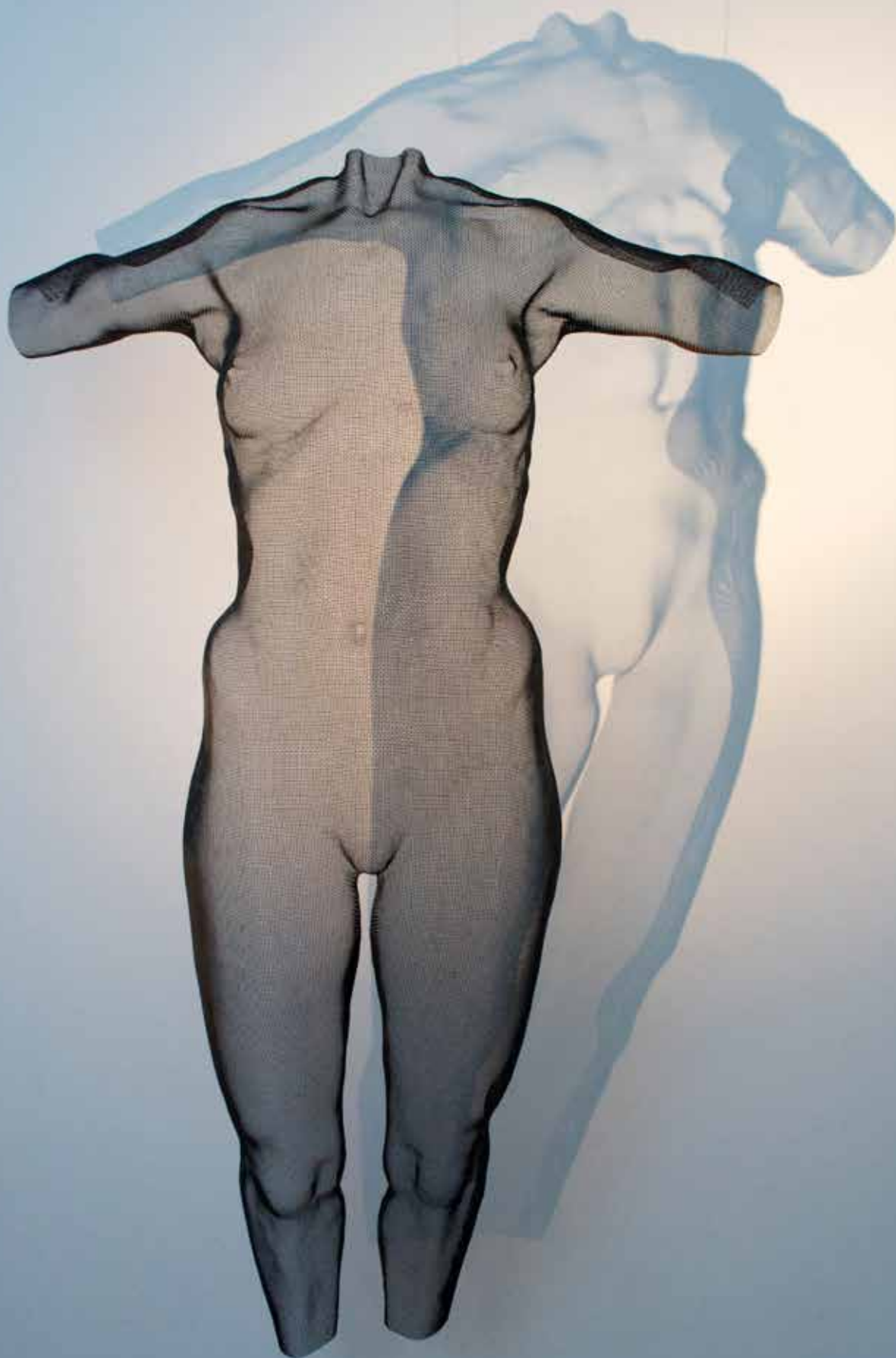


15 PSYNTIMATES black steel mesh, unique sculpture 52 x 42 x 13 cm (20 x 17 x 5 in)





16 XPOSE I copper steel mesh, unique sculpture 115 x 73 x 33 cm (45 x 29 x 13 in)



17 XPOSE II black steel mesh, unique sculpture 113 x 75 x 33 cm (44 x 29 x 13 in)

## OLIVIER CHALMIN (born 1955 France)

Olivier Chalmin comes from a family of artists and was surrounded by art throughout his childhood. He learned from very early on how to look at the world in an artistic way. After studying history of art at l'Ecole du Louvre in Paris, his passion for sculpture led him to take classes in anatomy and sculpture at the Petrus Academy of Paris. The old masters, along with his father, an expert in antiquities and classic Greek sculptures, inspired him to choose bronze as his preferred material.

Working with bronze is for him, the perfect alliance of technical achievement and artistic durability. In his early sculptures he focused his attention on various patinas exploring their different alluring qualities. He takes his inspiration from works by Auguste Rodin, Camille Claudel, Giacometti and others artists like Germaine Richier.

His sculptures are made from preparatory studies and sketches where he captures the motions he wants before creating a maquette in clay to be cast in bronze. It is a long process where chance does not have much place. The physical expression of internal sensations is what he aims for. Chalmin believes that the body expresses the soul and his role is to make it visible to the spectator. Chalmin explores this through his series 'OsCar' which are each uniquely 'clothed' with often iconic imagery.



18 OsCar "Balance"  
bronze, unique sculpture  
height 150 cm (59 in)



19 OsCar "Tribute to Andy Warhol"  
bronze, unique sculpture  
height 75 cm (30 in)



20 OsCar "Dollar, Dollar"  
bronze, unique sculpture  
height 75 cm (30 in)





21 OsCar "Che Guevarra"  
bronze, unique sculpture  
height 75 cm (30 in)



22 OsCar "Mao by Andy Warhol"  
bronze, unique sculpture  
height 75 cm (30 in)





23 OsCar "Tribute to Chagall"  
bronze, unique sculpture  
height 75 cm (30 in)



24 OsCar "American Comics"  
bronze, unique sculpture  
height 75 cm (30 in)

## NAOMI PRESS (born 1927 Poland)

Naomi Press's highly personalized approach to sculpture – contemplative, intuitive, passionate, direct, and concise – has revealed undreamed possibilities for her abstract forms in space. Her deft manipulation of sweeping planes and volumes, although tightly controlled, project the viewer into a timeless world where form and feeling have been integrated. This is a world, which values the profound life-affirming experience of her sculpture – a deeply felt, graceful encounter.

Naomi Press's work in steel, inspired in part by her friendship with the influential American critic Clement Greenberg, and by contact with other practitioners of the same style, such as David Smith and Antony Caro, places her firmly in the late phase of High Modernist sculpture, and, to be more precise, in that part of it that descends from Cubism. It is often distinguished by her employment of more sinuous forms than those of her male colleagues. It is tempting, knowing her early background in ballet, to see a number of these sculptures, not as being in any way abstracted representations of dance, but as metaphors for dance.



25 Seated Figure bronze, unique sculpture 27 x 22 x 16 cm (11 x 9 x 6 in)

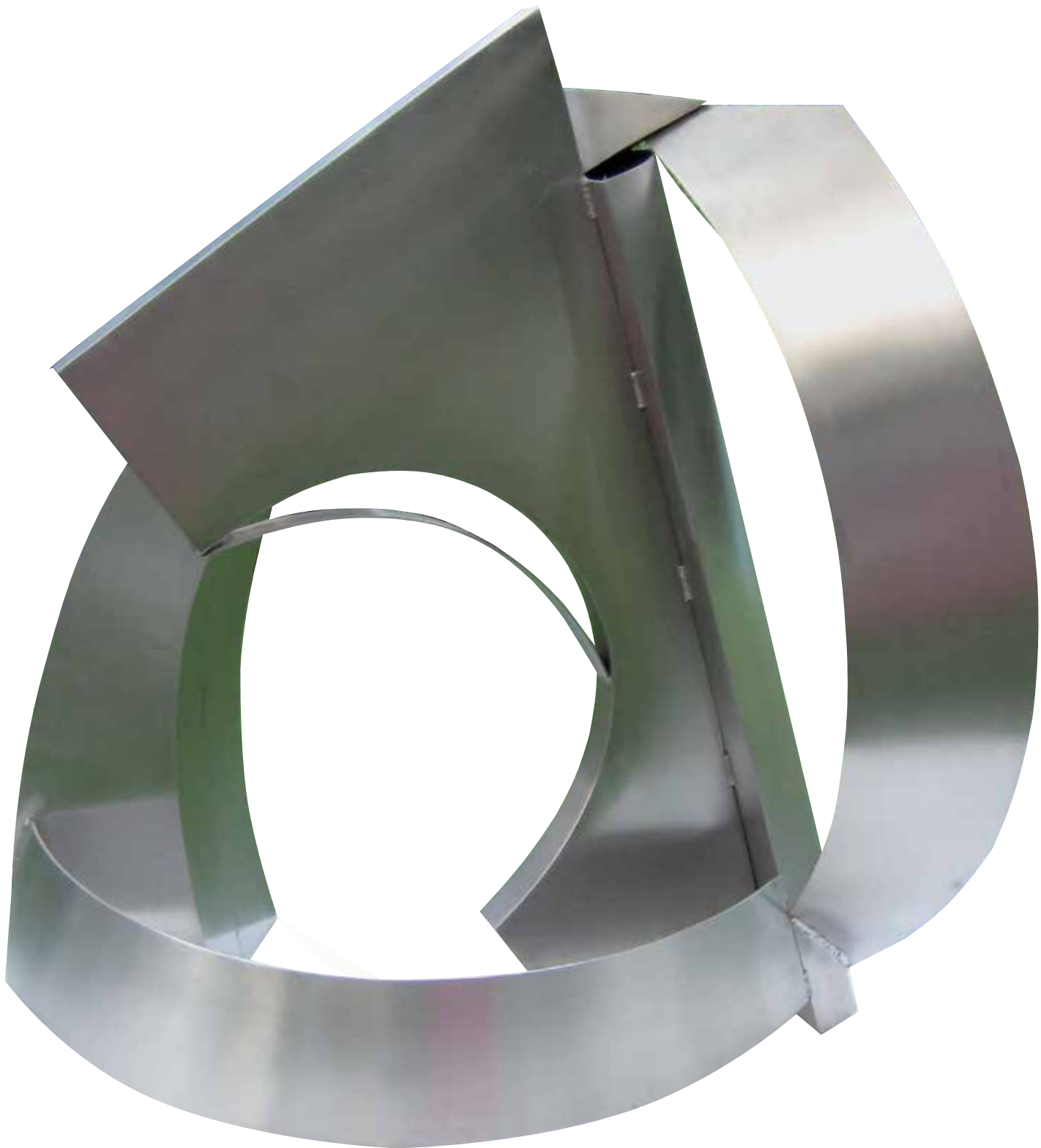


26 Reclining silvered bronze edition of 7 15 x 28 x 12 cm (6 x 11 x 5 in)



27 Spanish Dancer silvered bronze edition of 7 37 x 26 x 16 cm (15 x 10 x 6 in)





28 Equus stainless steel, unique sculpture 66 x 63 x 33 cm (26 x 25 x 13 in)



29 Ronde de Jambe stainless steel, unique sculpture 56 x 73 x 20 cm (22 x 29 x 8 in)



30 Arch with Raised Knee silvered bronze edition of 7 27 x 13 x 10 cm (11 x 5 x 4 in)





31 Arabesque silvered bronze edition of 7 27 x 13 x 10 (11 x 5 x 4 in)





ALBEMARLE

---

G A L L E R Y